



FRONT BUMPER INSTALLATION INSTRUCTIONS

P/N 210044.2 & 210044.3: 2003-2016, Chevy 1500, Van Front Bumper

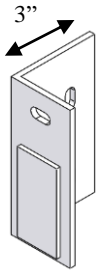
Please read before beginning

- *Stainless steel hardware may bind together when tightening—It is recommended that you apply an anti-seize assembly lubricant to the threads of each bolt before assembly*
- *This installation requires two people*
- *Unless otherwise specified, refer to the general torque value at the end of the instructions for specified torque values.*

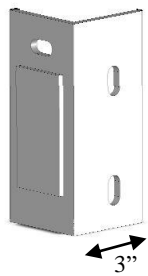


Required tools

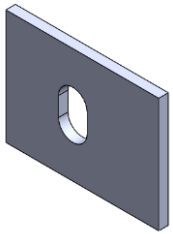
- Ratchet with 15mm, 17mm, 21mm, and 3/4" sockets
- 3/4" combination wrench
- Cutting tool (snips, shears, etc)
- Leveling tool



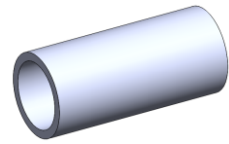
x1
Driver Angle Bracket
PN - 300154



x1
Passenger Angle Bracket
PN - 300155



x2
Angle Shims
PN - 350150



x 2
1" Crush Pipe
PN - 350610

Included hardware

Quantity

- | | |
|--|----|
| • 70108 - 1/2-13 x 6-1/2" Hex bolt | 2 |
| • 70103 - 1/2-13 x 2 1/2" Hex bolt | 4 |
| • 70049 - 3/4" Bolt | 2 |
| • 70048 - 3/4" Flat Washer | 4 |
| • 70047 - 3/4" Nylock Nuts | 2 |
| • 70033 - 1/2-13 Nylock nuts grade 8 | 6 |
| • 70035 - 1/2 ID Washer | 12 |
| • 70051 - Hex bolt 3/8-16 x 5" Stainless Steel | 4 |



- 70026 - Washer, Flat, Zinc 3/8 ID x 1 OD USS 8
- 70024 - Nut, Nylock, SS, 3/8-16 4
- 350150 – Angle Shims 2
- 400441 - Clamp, Muffler clamp 3" diameter (7.5mm) 2
- Antiseize Packet, 2g 1

Installation Instructions

1. To remove the stock bumper, first loosen the outer bolts on the tension rods using the 15mm socket, indicated by the square in figure 1 below—do not fully remove this bolt
2. Remove the two inner bolts (indicated by the circle in figure 1) holding the tension rods to the frame, then rotate the rod towards the tire so that it won't catch on anything when you pull the bumper off



Figure 1: Stock bumper tension rod

3. Disconnect any driving lights or wiring harnesses which are connected to the front bumper
4. Remove the two large bolts holding the bumper on (indicated by an arrow in figure 2 below)—they are located on the front of the frame, and go down vertically through it; use the 21mm socket



SCAN ME

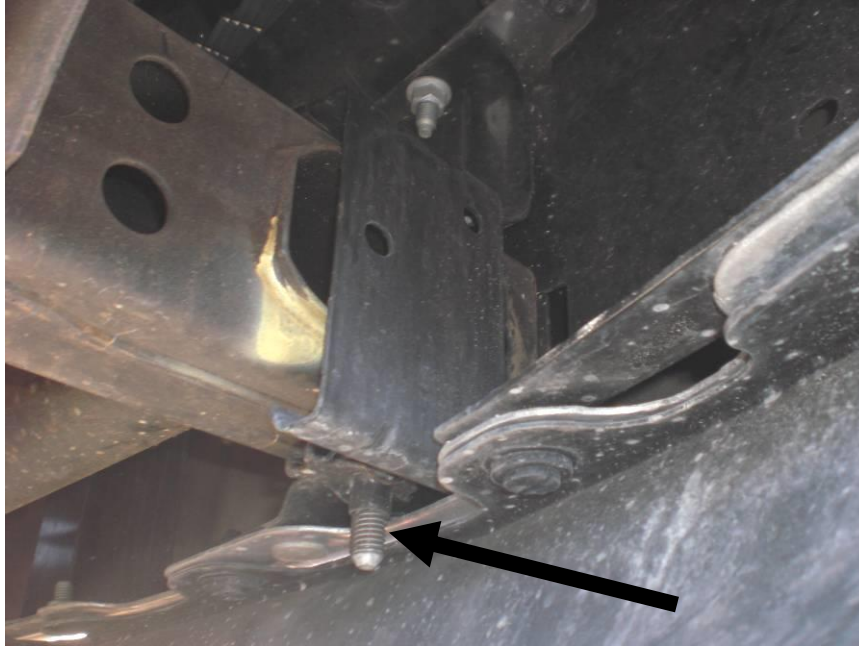


Figure 2: Stock bumper vertical retaining bolt

5. Remove any additional hardware or clips which may be still attached, then remove the stock bumper
6. Un-clip the plastic shield in front of the radiator, and trim it back so that the front edge is behind the horizontal pipe as shown in the figure below, then re-install it



Figure 3: Trimmed plastic shield

7. Install the supplied bumper brackets as shown in figure 4 below—use the supplied 6” long bolts, and with a washer on the bolt head, insert them through the slotted hole so that they go through the vertical hole in the frame—take note of the direction that they are facing



Figure 4: Installed bumper bracket

8. Fasten the bolts using the supplied 1/2" nuts and washers, but do not tighten them down fully yet—you may have to move the brackets forward or backward in a later step
9. With someone assisting you, lift up the Aluminess bumper and place it on the bumper brackets



Figure 5: View of toolbox inside, showing correct orientation of mounting hardware

10. Insert the 1/2" x 2 1/2" long bolts into the two upper holes in the toolbox sides, again with washers on the bolt heads and bolt heads on the inside of the toolbox, making sure they go through the slotted holes in the bumper brackets—one person may have to lift up on the bumper in order to line up the holes
11. Fasten these bolts using washers and nuts on the outside of the brackets, but do not tighten them down fully yet
12. Check that the bumper is aligned evenly left and right—a good way of checking this is by measuring the gap on each side of the bumper from the bumper's edge to the vehicle's fender
Use the supplied alignment shims to take up any gap between the bumper and the frame once the bumper is centered
13. Place a washer on each of the 3/4" Hex Bolts and insert them through each 3/4" hole in the side of the tool box below the 1/2" bolts from step 11. As you are inserting the 3/4" hex bolts place the provided crush pipe inbetween the frame horn so the 3/4" bolt goes through the crush pipe and out the other end of the frame. The bolts will extend completely through the frame horn with about 1" of threads showing. Continue by installing the small angle with the two 3/4" holes so that the angle covers the front and outer side of the frame horn. Place the 3/4" nylock nut on and tighten up both sides evenly to keep bumper centered and to take up remaining slack from bolt. See Figures 6 and 7 for reference.



Figure 6: 1/2" hex bolt with crush tube

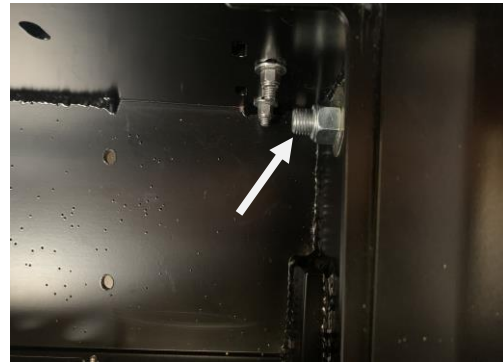


Figure 7: 1/2" hex bolt inside the toolbox

14. Install the Four 3/8 x 5" Bolts provided by placing through Clamp, Muffler clamp and around the 3" pipe and extending thru the back plate of the bumper. Place a 3/8" washer followed by a nylock nut on each. Snug these down initially and then tighten when bumper is aligned. (This attachment is to help "Trim" the angle of the bumper to be level)
15. After centering the bumper, tighten down all of the installation hardware, starting with the driver side lower bolt, then the passenger side lower bolt, then the driver side upper bolts, and finally the passenger side upper bolts—check that the bumper remains centered and level during this process
16. Once the fastening hardware is secure, the installed bumper should resemble the one shown in figure 8 below.
17. The fairlead cover has holes for mounting a license plate—use the supplied 1/4" hardware to bolt on your license plate here
18. Install the toolbox door.



Figure 8: Installed bumper



Aluminess Products Inc
Info@Aluminess.com
619-449-9930

General Torque Values			
Size	Stainless Steel	Zinc	Grade 8
#6-32	10 lb-ft	--	--
#8-32	18.4 lb-ft	--	--
#10-32	26.6 lb-ft	--	--
1/4"-20	5.3 lb-ft	7.8 lb-ft	9 lb-ft
5/16"-18	10.9 lb-ft	16 lb-ft	18 lb-ft
3/8"-16	19.4 lb-ft	28.3 lb-ft	33 lb-ft
7/16"-14	31 lb-ft	45 lb-ft	52 lb-ft
1/2"-13	47 lb-ft	69 lb-ft	80 lb-ft
M6	4.7 lb-ft	5.8 lb-ft	--
M8	11.3 lb-ft	14.1 lb-ft	--
M10	22.3 lb-ft	27.9 lb-ft	--
M12	38.9 lb-ft	48.7 lb-ft	--



Aluminess Products, Inc. (Aluminess) Warranty

1. Lifetime Warranty. Aluminess provides a lifetime warranty of its products to the original retail purchaser provided such products are installed correctly according to the official Aluminess installation instructions. Any modification to the original product design, function or use of any Aluminess products will void the Aluminess warranty. Aluminess will have sole discretion to determine warranty eligibility for any and all Aluminess products sold to any purchaser.
2. Limited Remedies. Subject to any limitations and exclusions described herein, and subject to Aluminess' determination of warranty eligibility, Aluminess will remedy defects in product materials and/or workmanship of any product by repairing or replacing such defective product, which shall be within Aluminess' sole discretion, without charge for parts or labor. Aluminess may elect in its sole discretion not to replace a defective product and issue the purchaser a refund equal to the purchase price of any defective product or purchaser may elect to receive a credit (equal to such refund) toward the purchase of new Aluminess products. Repair or replacement of a defective product or providing a refund or credit to purchaser will be purchaser's exclusive remedy under this warranty. Damage to a purchaser's vehicle, cargo and/or any other person or property is expressly excluded from the Aluminess warranty.
3. Modification. Aluminess products are designed to be mounted to factory equipped vehicles. Aftermarket additions to such vehicle may or may not require modification of an Aluminess product. The Aluminess warranty does not extend to any Aluminess products that are modified to fit around other otherwise accommodate or be compatible with any aftermarket vehicle accessories or alterations. Aluminess does not guarantee fitment with any other aftermarket accessories or modified vehicle, and it is up to purchaser to determine fitment prior to purchasing any Aluminess product.
4. Damage. Damage to Aluminess products due to normal wear and tear, including, but not limited to, cosmetic issues and superficial scratches, or structural damage to an Aluminess product in connection with any vehicle collisions or other structural degradation in connection with the use of such vehicle (on road or off road) will not be covered by the Aluminess warranty. Additionally, any product user's misuse, neglect, overloading, improper maintenance or improper installation or repair of any Aluminess products are not covered under the Aluminess warranty.
5. Use of the Products. Aluminess products are designed for off road vehicle use. Installing Aluminess products on a vehicle may exceed the factory designed capabilities of such vehicle and could potentially lead to vehicle damage. Aluminess will not be responsible for any damage caused to a purchaser or user's vehicle or any vehicle accessories caused by the use of any Aluminess products. It is to the sole responsibility of purchaser to inspect and ensure that the intended vehicle and Aluminess products are suitable and compatible for travel on road and off road. No seller nor any manufacturer of Aluminess products will be liable for any loss, damage or injury directly or indirectly arising from the use of any Aluminess products. Before using any Aluminess products, the purchaser or user will determine the suitability of the product(s) for their intended use(s) and the purchaser or user shall assume all responsibility and risk in connection therewith.
6. DISCLAIMER. THE ALUMINESS WARRANTY IS EXPRESSLY MADE IN LIEU OF ANY AND ALL OTHER WARRANTIES, AND EXCEPT FOR THE ALUMINESS WARRANTY SET FORTH HEREIN, ALUMINESS MAKES NO WARRANTY WHATSOEVER WITH RESPECT TO ANY ALUMINESS PRODUCT, INCLUDING ANY WARRANTY OF MERCHANTABILITY AND FITNESS FOR A PARTICULAR PURPOSE, WHETHER EXPRESS OR IMPLIED BY LAW, COURSE OF DEALING, COURSE OF PERFORMANCE, USAGE OF TRADE, OR OTHERWISE.
EXCEPT FOR PURCHASER'S LIMITED REMEDIES SET FORTH HEREIN, IN NO EVENT WILL ALUMINESS BE LIABLE FOR ANY LOST PROFITS, LOST SALES, OR FOR ANY CONSEQUENTIAL, DIRECT, INDIRECT, INCIDENTAL, SPECIAL, EXEMPLARY OR PUNITIVE DAMAGES OR FOR ANY OTHER DAMAGES OF ANY KIND OR NATURE.
7. Compliance. Aluminess cannot guarantee that its products comply with all Federal, State, and/or local laws. Purchaser is advised to review local vehicle codes for compatibility prior to purchase to ensure that the installation and use of any Aluminess products does not violate any applicable laws.
8. Warranty Claim Submission. Purchaser will responsible for returning any defective product to Aluminess for warranty consideration and purchaser may be responsible for all costs associated with shipping the product to and from Aluminess. Prior to returning any product for warranty, purchaser must contact Aluminess Products Inc. for proper authorization.